

# Cynomolgus DLL3 Protein

Cat. No. DLL-CM103



## Description

<b>Source</b>	Recombinant Cynomolgus DLL3 Protein is expressed from HEK293 with His tag at the C-Terminus. It contains Ala27-Ala477.
<b>Accession</b>	A0A2K5WSR1
<b>Molecular Weight</b>	The protein has a predicted MW of 48.80 kDa. Due to glycosylation, the protein migrates to 52-62 kDa based on Bis-Tris PAGE result.
<b>Endotoxin</b>	Less than 1EU per µg by the LAL method.
<b>Purity</b>	> 95% as determined by Bis-Tris PAGE

## Formulation and Storage

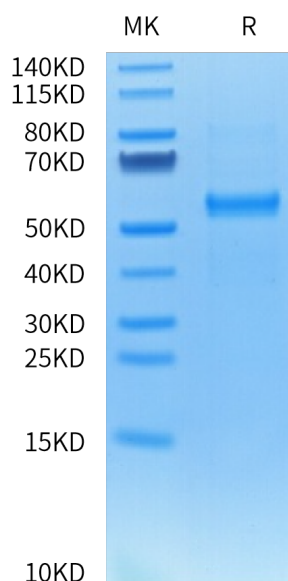
<b>Formulation</b>	Lyophilized from 0.22 µm filtered solution in 20mM Tris, 200mM NaCl, 200mM L-arginine (pH 8.5). Normally 8% trehalose is added as protectant before lyophilization.
<b>Reconstitution</b>	Centrifuge the tube before opening. Reconstituting to a concentration more than 100 µg/ml is recommended. Dissolve the lyophilized protein in distilled water.
<b>Storage</b>	-20 to -80°C for 12 months as supplied from date of receipt. -80°C for 3 months after reconstitution. Recommend to aliquot the protein into smaller quantities for optimal storage. Please minimize freeze-thaw cycles.

## Background

Delta-like protein 3 (DLL3) is a transmembrane protein that belongs to the Delta/Serrate/Lag-2 (DSL) family of Notch ligands. DLL3 inhibits primary neurogenesis. May be required to divert neurons along a specific differentiation pathway. Plays a role in the formation of somite boundaries during segmentation of the paraxial mesoderm (By similarity).

## Assay Data

### Bis-Tris PAGE



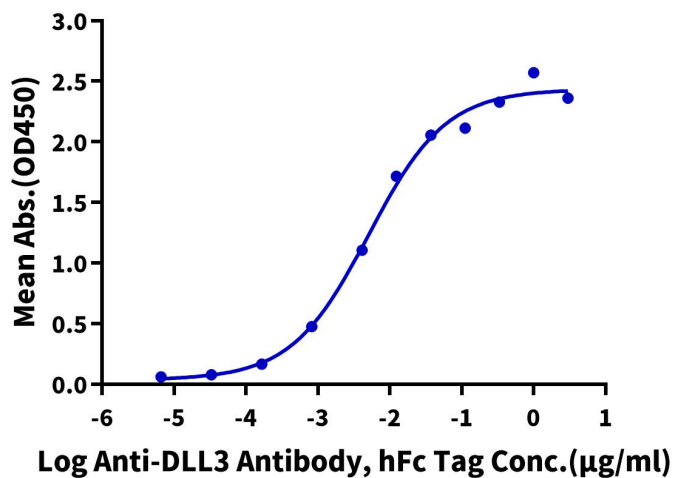
Cynomolgus DLL3 on Bis-Tris PAGE under reduced condition. The purity is greater than 95%.

### ELISA Data

Assay Data

**Cynomolgus DLL3, His Tag ELISA**

0.02µg Cynomolgus DLL3, His Tag Per Well



Immobilized Cynomolgus DLL3, His Tag at 0.2µg/ml (100µl/well) on the plate. Dose response curve for Anti-DLL3 Antibody, hFc Tag with the EC50 of 5.0ng/ml determined by ELISA.